

# APHASIA HOME SUPPORT GUIDE

## Home Practice Guides: Semantic Feature Analysis

### Principles

- This method involves analysing a target word to strengthen the semantic network in the brain by **reinforcing its connections to other words**, which helps patients retrieve the word more effectively (Boyle, 2010; Efstratiadou et al., 2018).

### 1 Target Audience

Patients with **mild to moderate** aphasia

### 2 Materials

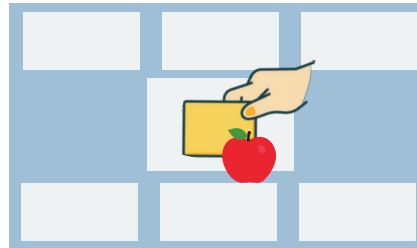
- A Semantic Feature Analysis chart, practice pictures, and a pen.
- Or download our Aphasia Training App.



### 3 Steps

1

What is this?

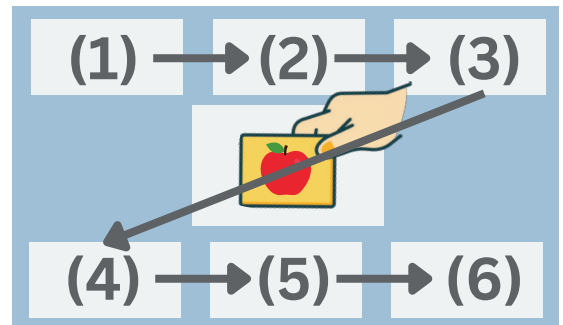


Place the target word (as a picture or object) in the centre of the analysis chart.  
Ask the patient, "What is this?"

2

### Ask the patient the following six questions about its meaning:

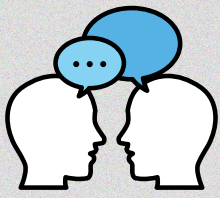
1. What category does it belong to?
2. What do you use it for? / What function(s) does it have?
3. When do you use/see it?
4. What characteristics does it have? / Can you describe it?
5. Where do you usually use/see it?
6. What does it make you think of?



After the patient answers (or after a discussion), write the correct answer in the chart if the patient understands text, or place a related picture there if they do not.

\* If the patient is unable to answer, the carer should provide the answer directly.

\* If certain questions do not have a reasonable answer, the carer may **omit them as appropriate**.

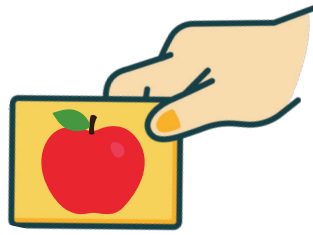


# APHASIA HOME SUPPORT GUIDE

## Home Practice Guides: Semantic Feature Analysis



3



Ask the patient to **name the target word** once more, "What is this?"  
 If the patient is unable to answer, the carer can say the word directly and ask the patient to **repeat** it.

<sup>①</sup> The information provided is for reference purposes only. For professional management or to learn more, please contact a speech and language therapist.

### Reference(s)

- BOYLE, M. (2010). SEMANTIC FEATURE ANALYSIS TREATMENT FOR APHASIC WORD RETRIEVAL IMPAIRMENTS: WHAT'S IN A NAME? TOPICS IN STROKE REHABILITATION, \*17\*(5), 411–422.
- EFSTRATIADOU, E. A., PAPATHANASIOU, I., HOLLAND, R., ARCHONTI, A., & HILARI, K. (2018). A SYSTEMATIC REVIEW OF SEMANTIC FEATURE ANALYSIS THERAPY STUDIES FOR APHASIA. JOURNAL OF SPEECH, LANGUAGE, AND HEARING RESEARCH, \*61\*(5), 1261–1278.

Organised By



Funded By



Incubated By



樂施會  
**OXFAM**  
 Hong Kong

無窮世界  
 World Without Poverty