

# APHASIA HOME SUPPORT GUIDE

## Communication Strategies: Basic Strategies



### When You Are Speaking:



#### Use Simple Language

Use simple and direct words. Avoid pronouns (e.g., he, she, it) and keep sentences short.



#### Use Non-Verbal Methods to Support Communication

Make more use of body language, gestures, writing, and drawing to communicate.



#### Ask Close-ended Questions Rather Than Open-ended Ones

For example, use yes/no questions or questions with options.



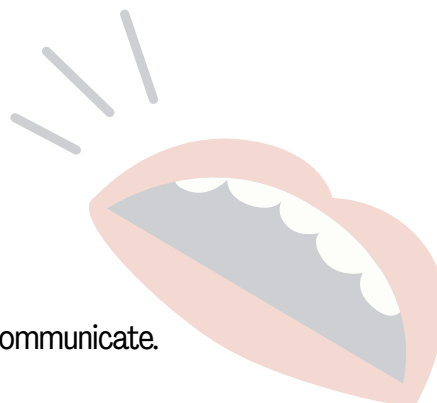
#### Reiterate Key Points

Summarise the main points during the conversation to ensure the patient understands.



#### Observe the Patient's Expression

Pay attention to the patient's eyes and expressions (e.g., frowning, hesitant reactions) during the conversation, and repeat key points as needed.



### When You Are Listening:



#### Listen Patiently

Give the patient more time to prepare. Avoid finishing their sentences for them.



#### Offer Prompts

When the patient has word-finding difficulties, give appropriate prompts to help them express themselves.



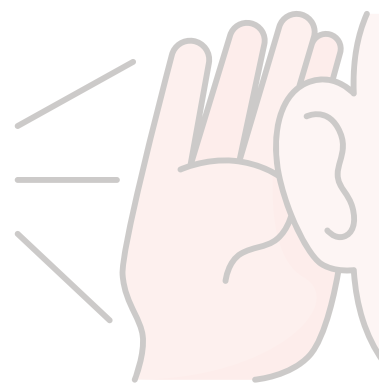
#### Avoid Over-Correcting

Gently point out grammatical errors and model the correct, full sentence in response, without changing the original meaning.



#### Confirm the Message

Check with the patient that the message you received is what they intended to say, to reduce misunderstandings.



<sup>①</sup> The information provided is for reference purposes only. For professional management or to learn more, please contact a speech and language therapist.

#### Reference(s)

- LOCK, S., ET AL. (2001). SUPPORTING PARTNERS OF PEOPLE WITH APHASIA IN RELATIONSHIPS AND CONVERSATION (SPPARC). INTERNATIONAL JOURNAL OF LANGUAGE & COMMUNICATION DISORDERS, 36(SUP1), 25-30.
- WILKINSON, R. (1995). APHASIA: CONVERSATION ANALYSIS AND SCAFFOLDING. APHASIOLOGY, 9(6), 543-551.

Organised By

Funded By

Incubated By

